

WT-M ePTFE Gasket Tape - Assembly Instructions

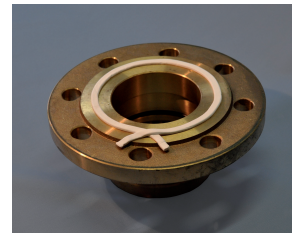


Figure 1

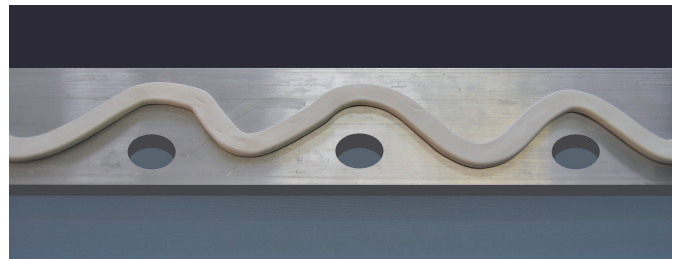


Figure 2

- Select gasket so that the sealing width or cross section covers 1/4 to 1/3 of the sealing surface.
- Remove residues of old sealings and any grease or corrosion.
- Release the protective film from the self-adhesive back for about 20 cm and mount the gasket tape, beginning from a bolt hole, closely to the bolt circle.
- Close the tape by overlapping the ends (Figure 1).
- For gasket tapes with a cross section larger or equal 17x6 mm, cut the ends as shown in Figure 3.1. and Figure 3.2.
- For stress-sensitive flanges mount tape as shown in Figure 2 and join the endings as shown in Figure 3.1. and 3.2.
- Using a torque wrench, tighten nuts crosswise in 3 to 4 progressive torque sequences until the optimum torque or bolt force is reached.

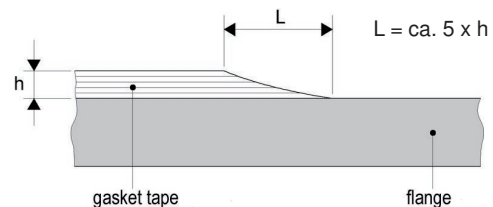


Figure 3.1.

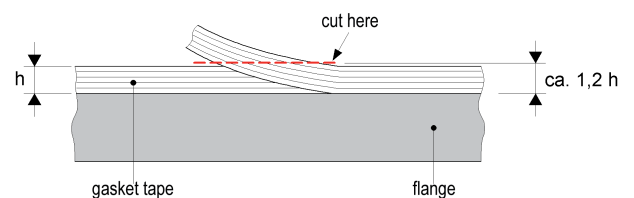


Figure 3.2.

Please note: All technical information and advice given is based on our previous experience to the best of our knowledge. However, this does not constitute any liability on our part. Given that only someone who is able to check all application conditions on site may reliably assess the performance of a product, specifications and values are always subject to revision by the user.

© Copyright 2013 . All rights reserved Rev.Nr.: 01/30.07.2013